

Setup SCCM WSUS 2012

Start the config manager console, click on **Administrator** in the side bar, click on **site configuration**, and the select **Servers and site system roles**, right click server and add site system roles

The screenshot shows the System Center 2012 Configuration Manager console. The left-hand navigation pane is expanded to 'Administration' > 'Site Configuration' > 'Servers and Site System Roles'. The main pane displays a table with one server entry:

Icon	Name	Site Code	Count of roles
	\\SCCM2012.twynham.tctrust.net	NH1	6

A blue arrow points from the handwritten text 'Right click' to the server entry in the table. Below the table, the 'Site System Roles' section is visible, listing various roles such as Component server, Distribution point, Management point, Site database server, Site server, and Site system.

Add the **site systems role Software update point** and enter proxy settings, if needed.

Add Site System Roles Wizard

General

General

System Role Selection

Summary

Progress

Completion

Select a server to use as a site system

Name: Example: server1.corp.contoso.com

Site code:

Specify an FQDN for this site system for use on the Internet
 Internet FQDN: Example: internetrv2.contoso.com

Require the site server to initiate connections to this site system
 Select this option when the site system server accepts connections from the Internet or is in a forest that is untrusted by the site server. After the site system and any site system roles are installed, the site server initiates all connections to this site system.

When you select this option, connections to this site system use the Site System Installation Account.

Site System Installation Account

Use the site server's computer account to install this site system

Use another account for installing this site system

Site System Membership:

Forest FQDN:

Domain FQDN:

Add Site System Roles Wizard

Software Update Point

General

System Role Selection

Software Update Point

Active Settings

Synchronization Source

Synchronization Schedule

Supersede Rules

Classifications

Products

Languages

Summary

Progress

Completion

Specify software update point settings

A software update point integrates with Windows Server Update Services (WSUS) to provide software updates to Configuration Manager clients.

For Configuration Manager to use a software update point that is not installed on the site server, you must first install the WSUS administration console on the site server.

Use a proxy server when synchronizing software updates

Use a proxy server when downloading content with Auto Deployment Rules

Proxy server name:

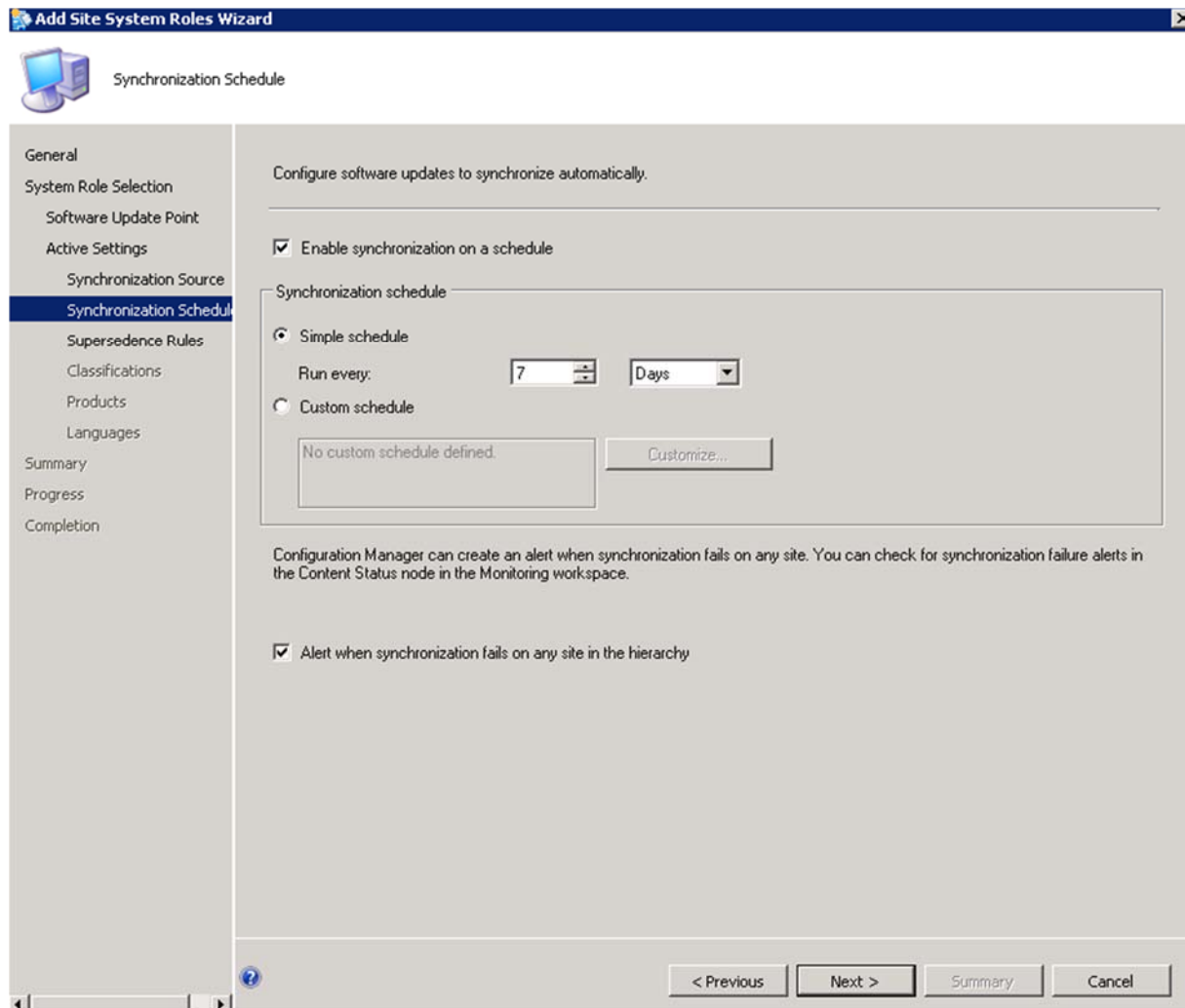
Port:

Use credentials to connect to the proxy server

Software Update Point Proxy Server Account

The Software Update Point Proxy Server Account provides authenticated access to the proxy server when Configuration Manager synchronizes software updates on the Internet.

Use this server as the Active Software Update Point, synchronize from Microsoft update and set a schedule



Leave next page on default, **immediately expire software updates**, then choose the update you would like to apply.

Hit next then finish



Completion

- General
- System Role Selection
 - Software Update Point
- Active Settings
 - Synchronization Source
 - Synchronization Schedule
 - Supersedece Rules
- Classifications
- Products
- Languages
- Summary
- Progress
- Completion**

You have successfully completed the Add Site System Roles Wizard with the following settings



The Add Site System Roles Wizard completed successfully

Details:

Create a site system server with the following settings:

- ✓ Success: Site System Name
 - SCCM2012.twynham.tctrust.net
- ✓ Success: Settings
 - Public FQDN Name: Not specified
 - Installation Account: Computer Account
- ✓ Success: Roles
 - Software update point

To exit the wizard, click Close.



< Previous

Next >

Summary

Close